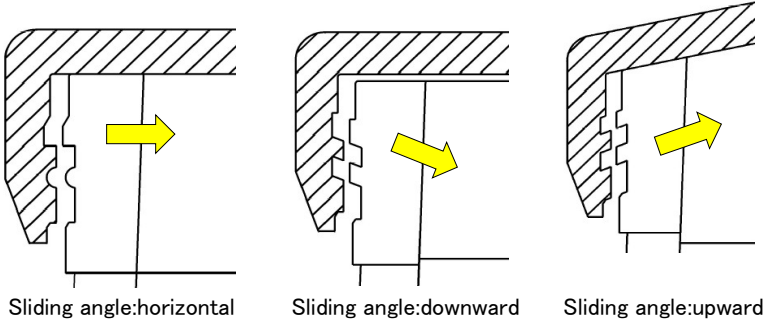
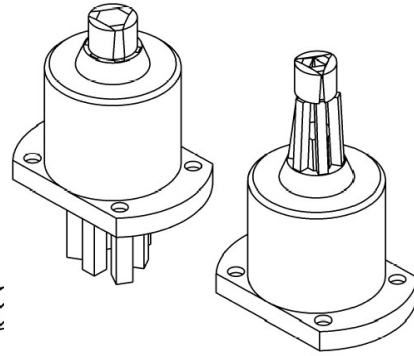
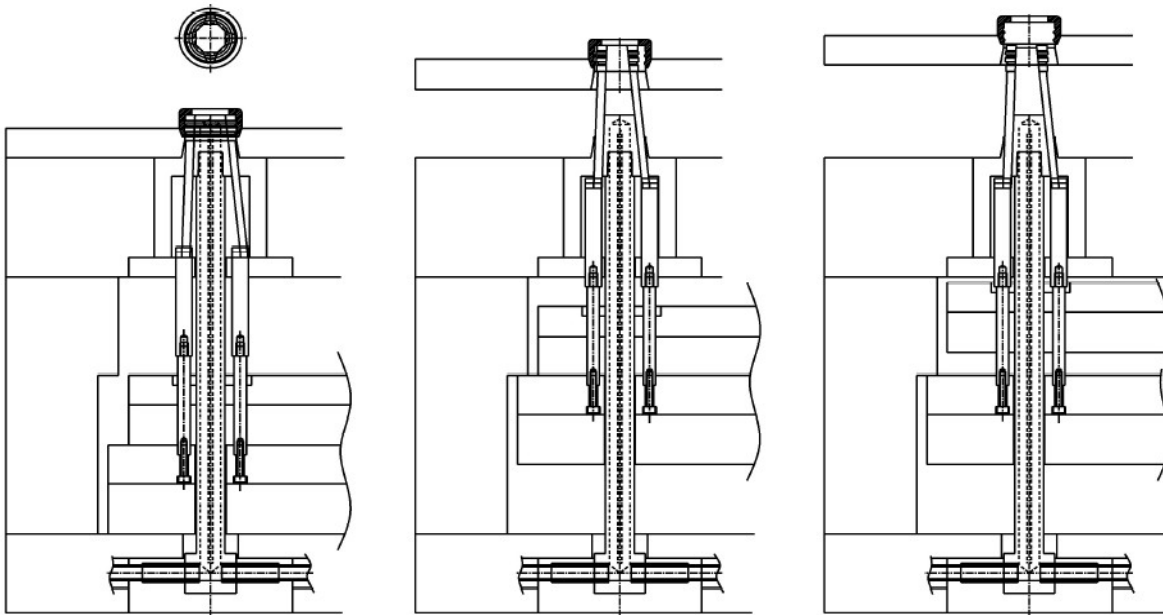


# SHRINK SUPPON

- The internal undercut of cylindrical products is molded by the separate pieces of SHRINK SUPPON that is shrunk with ejection.
- SHRINK SUPPON can downsize your mold and mount on the mold easily.
- 15mm in diameter of shape piece on SHRINK SUPPON can mold a 0.6mm undercut.
- You can freely select the sliding angle.



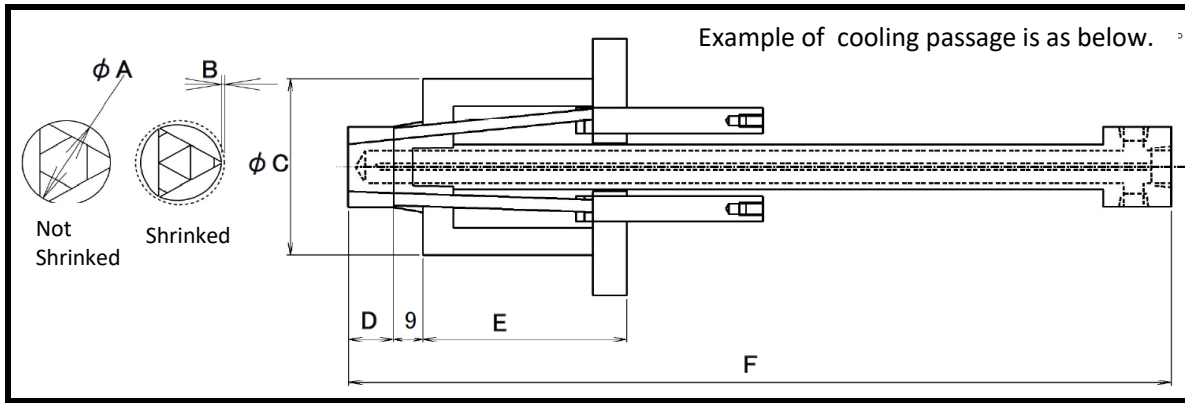
## SHRINK SUPPON action



1. The mold die open after injected.

2. Separate shape pieces shrink with ejection.

3. Stripper plate push up the molded product.



### The design parameter of SHRINK SUPPON

Unit : mm

A Shape piece diameter	B Stroke	C Holder diameter	D Shape piece height	ejection stroke	E Holder length	F Total length
8	0.33	35	1-10	30	56	You can freely design the total length include cooling passage.
			11-15	40	66	
10	0.42	38	1-10	30	56	
			11-15	35	61	
15	0.63	45	16-20	40	66	
			1-10	30	56	
			11-15	35	61	
			16-20	40	66	
20	0.97	56	21-25	45	71	
			26-30	50	76	
			1-10	30	56	
			11-15	35	61	
			16-20	40	66	
25	1.25	66	21-25	45	71	
			26-30	50	76	
			31-35	55	81	
			36-40	60	86	
			41-45	65	91	
			46-50	70	96	
			1-10	30	56	
			11-15	35	61	
30	1.48	75	16-20	40	66	
			21-25	45	71	
			26-30	50	76	
			31-35	55	81	
			36-40	60	86	
			41-45	65	91	
			46-50	70	96	

※This dimension is the minimum parameter of the shape pieces stroke.

-You can design the shape piece diameter(parameter of A) other than the above parameters.

-You can increase the shape piece height(parameter of D) when degreased the stroke(parameter of B).

-You can not design the above stroke(parameter of B) in some undercut shape.

#### About order

-Please feel free to contact us.

For solving a your undercut problem, please send us some undercut shape data.

-SHRINK SUPPON is made to order, so we will inform you the delivery date every order.